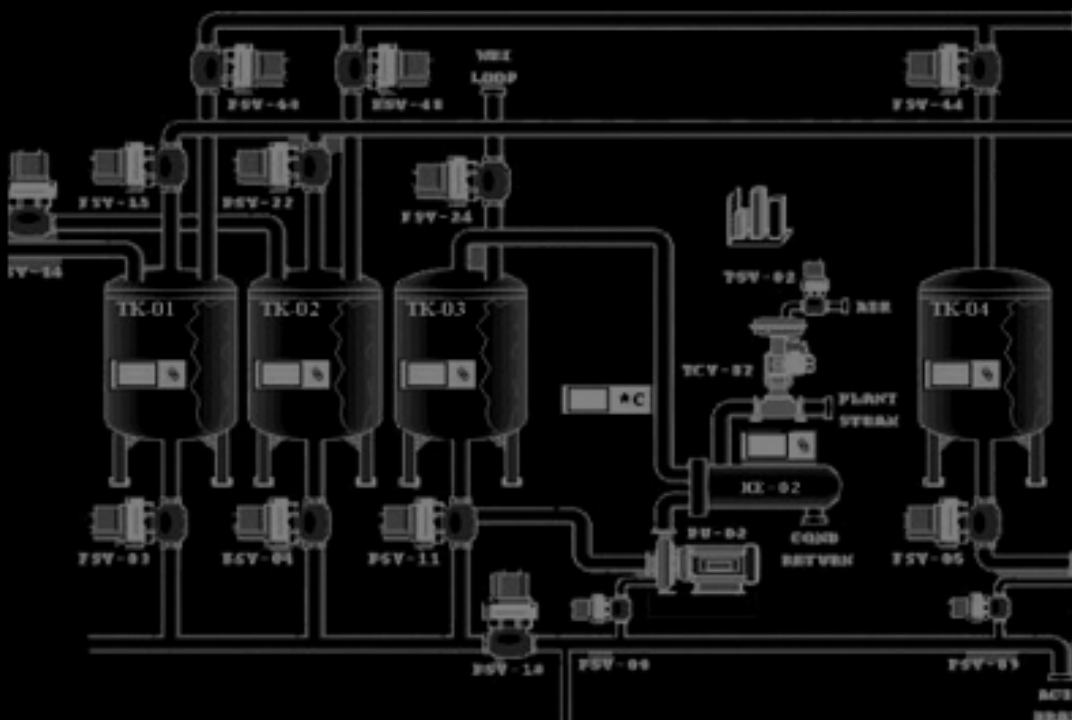
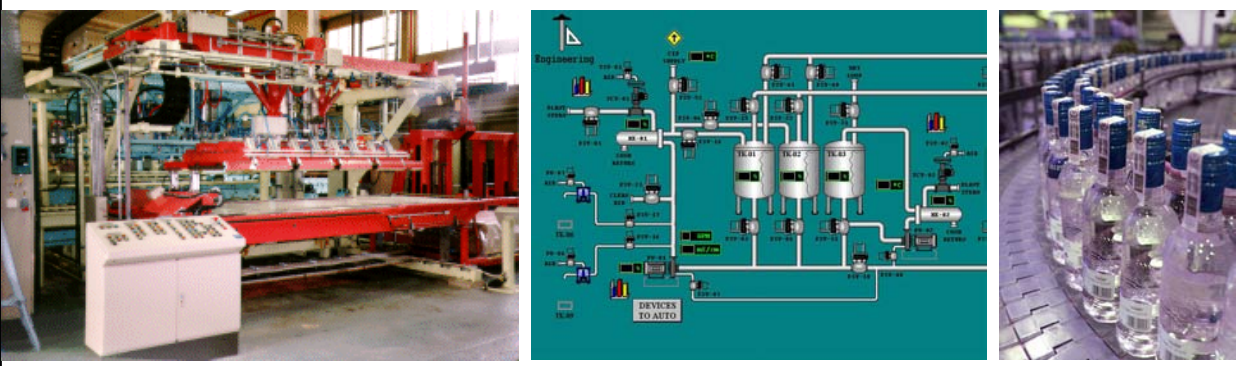




Borton
Lawson

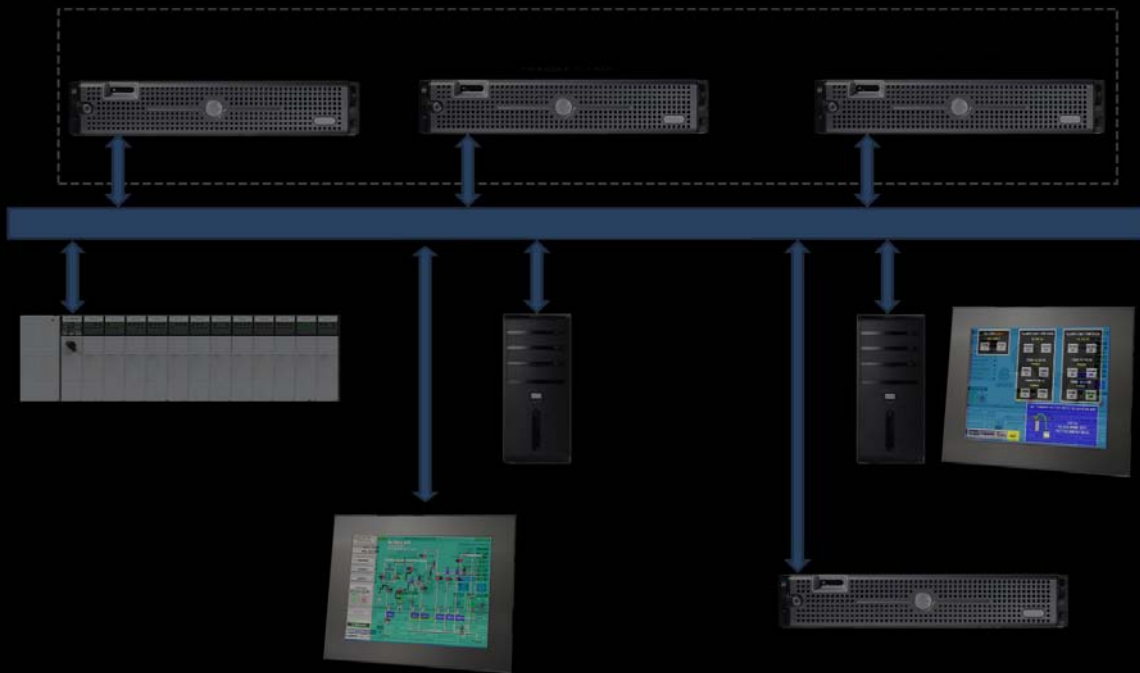
automation
solutions



making our client's vision a reality
www.borton-lawson.com

Why choose Borton-Lawson's Automation Team?

Our team of automation professionals will truly make your vision a reality by taking your conceptual ideas then providing an automation architecture that accomplishes your goals. We can provide you with schematic and P&ID drawing packages, control panel construction, programming, validation, and testing. To complete your project, we offer O&M manuals, software training, and on-site system administration. When your project requires a multi-disciplined approach, we have our own in-house team of mechanical, electrical, structural, and process engineers to design energy-efficient solutions for your projects. We offer our clients a complete turn-key solution.



Supported systems

Allen Bradley
Cognex/DVT Vision System
GE
GEfanuc Proficy
Modicon

Rockwell Software
Siemens / TI
Specter Instruments
Wonderware

Process and Manufacturing

Plastics, Metal, Defense, Chemical, Consumer Products, Food and Beverage

Batch & Blending Systems

Combustion Control

Conveyor Systems

Extruding

Facility Monitoring & Alarming

Historical Data Collection

Machine and Process Control

Material Load & Unload

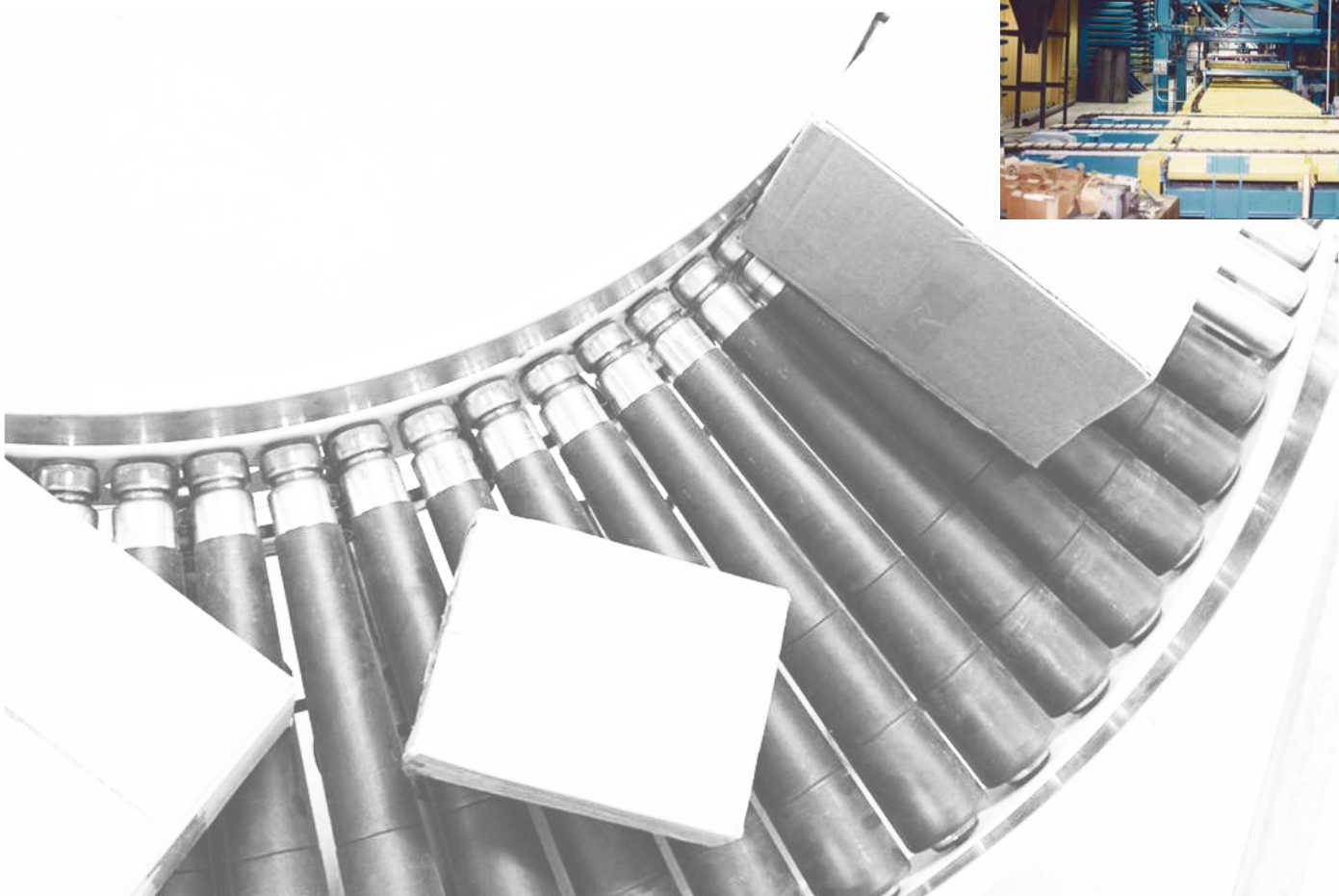
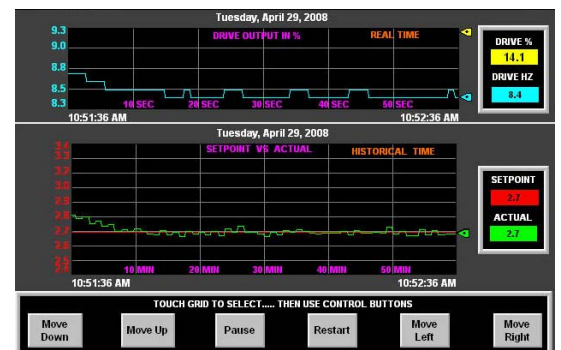
On-Site Testing & Commissioning

Oven/Dryers

Sanitation & CIP Systems

Shrink Wrappers & Palletizers

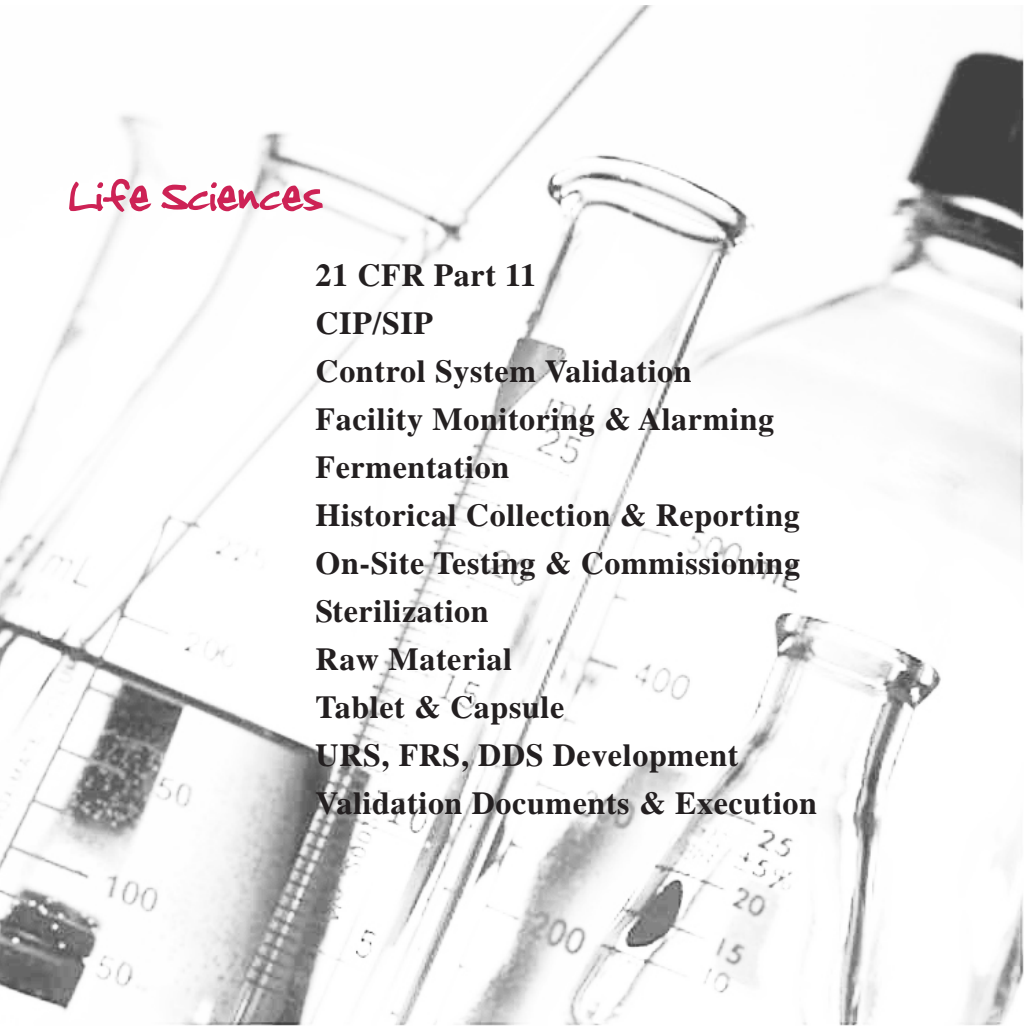
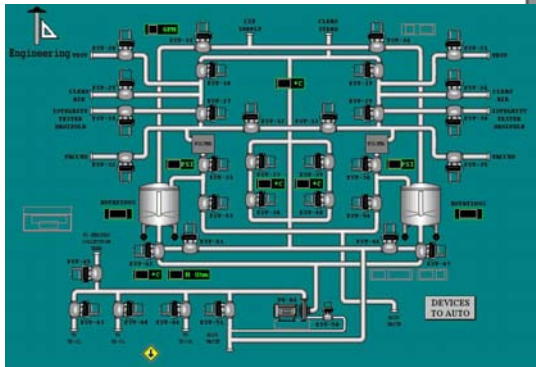
Weighing Systems



Life Sciences

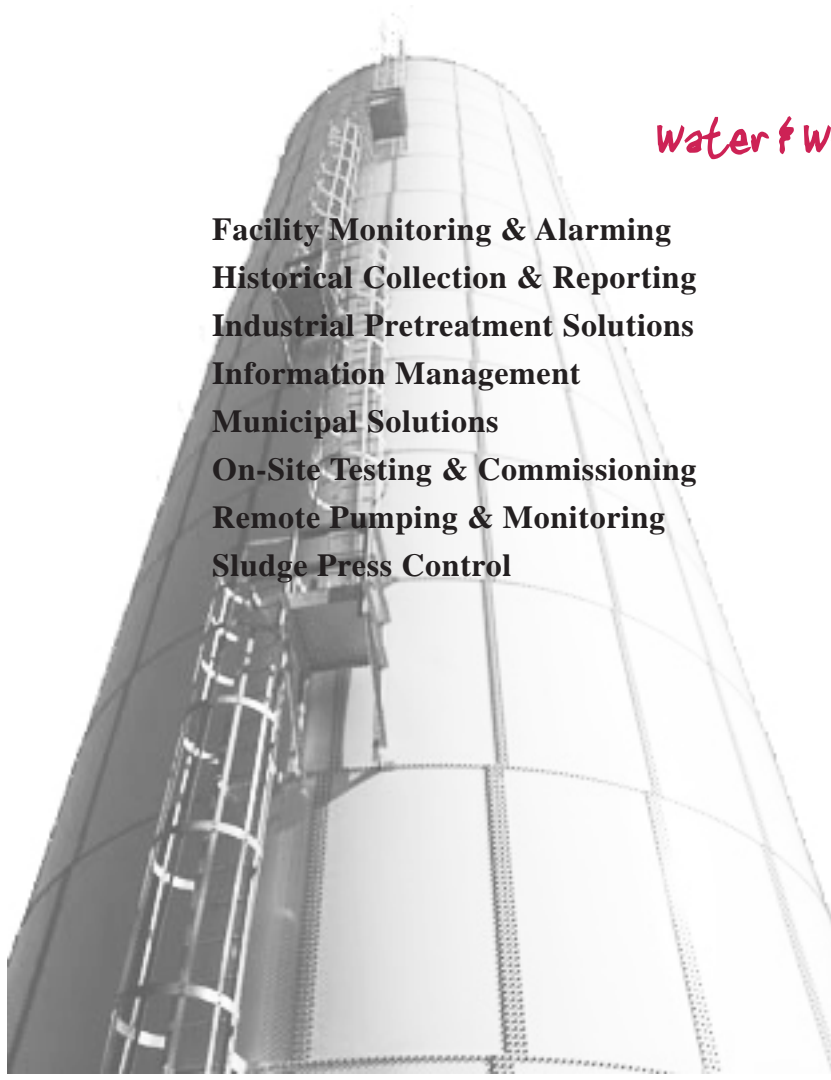
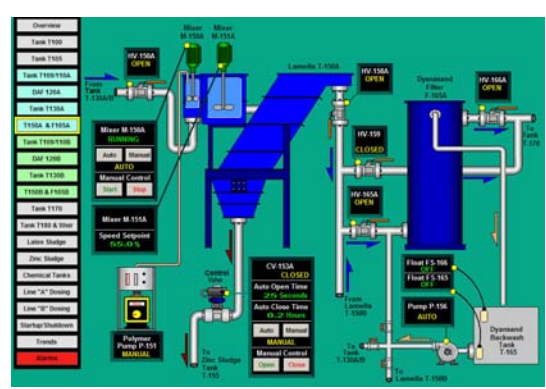
CP Sequence	CIP Phases	Step	CIP Step Instructions	Action
01	Decontamination Setup	01	Condition Pump 1001 to GFI and all Auto Valves are CL 0003	Auto
02	Flush Cycle	02	Condition all manual valves are CL 0003 and 0102, 0103, 0104, 0105, 0106, 0107, 0108, 0109, 0110, 0111, 0112, 0113, 0114, 0115, 0116, 0117, 0118, 0119, 0120, 0121, 0122, 0123, 0124, 0125, 0126, 0127, 0128, 0129, 0130, 0131, 0132, 0133, 0134, 0135, 0136, 0137, 0138, 0139, 0140, 0141, 0142, 0143, 0144, 0145, 0146, 0147, 0148, 0149, 0150, 0151, 0152, 0153, 0154, 0155, 0156, 0157, 0158, 0159, 0160, 0161, 0162, 0163, 0164, 0165, 0166, 0167, 0168, 0169, 0170, 0171, 0172, 0173, 0174, 0175, 0176, 0177, 0178, 0179, 0180, 0181, 0182, 0183, 0184, 0185, 0186, 0187, 0188, 0189, 0190, 0191, 0192, 0193, 0194, 0195, 0196, 0197, 0198, 0199, 0200	Manual
03	Air Purge #1	03	Reverse Transfer Valve and Drain Reservoir 10 Line Valve	Manual
04	CIP Wash Cycle	04	Inject 1000 mgal Sodium Hypochlorite (SODIUM HOCL) according to 101 and 102	Manual
05	Flush Cycle	05	Waiting for Res 200 step completion	Auto
06	Air Purge #2	06	Open HV 1	Auto
07	CIP Rinse	07	Open HV 2	Auto
08	CIP Drain	08	Pump 1001 overboard - Flush System Program	Auto
09	SP Rinse	09	Condition Pump 1001 & GFI and all Auto Valves are CL 0003	Auto
10	SP Drain	10	Waiting for Res 200 step completion	Auto
11	SP Rinse	11	All Purge Cycle is in Progress	Auto
12	SP Drain	12	Waiting for Res 200 step completion	Auto

21 CFR Part 11
 CIP/SIP
 Control System Validation
 Facility Monitoring & Alarming
 Fermentation
 Historical Collection & Reporting
 On-Site Testing & Commissioning
 Sterilization
 Raw Material
 Tablet & Capsule
 URS, FRS, DDS Development
 Validation Documents & Execution



Water & Wastewater

Facility Monitoring & Alarming
 Historical Collection & Reporting
 Industrial Pretreatment Solutions
 Information Management
 Municipal Solutions
 On-Site Testing & Commissioning
 Remote Pumping & Monitoring
 Sludge Press Control



control system Engineering & Design Services

AC & DC Drive Control

Advanced PAC & PLC Programming

AutoCAD, Promis•e, & Revit Drafting

Component Specification

Control Panel Design & Fabrication

Electrical/Mechanical Interface

Historical Collection & Reporting

Historical Data Development

Industrial Solutions

Information Management

Machine Control

Municipal Solutions

Network Integration

On-Site Support

P&ID Development

Remote Telemetry

SCADA & HMI Development

System Documentation

System Integration

System Manuals/Training

Validation Services

Vision Systems

Energy Efficient Solutions



services

Architecture
Automation
Bridge Design
Electrical Design
Environmental
Facilities Engineering
Highway Design
Land Development
Landscape Architecture
Land Surveying
Mechanical Design
Municipal Services
Structural Design
Traffic & Signal Design
Water Resources
Water & Wastewater

Contact: Dave Summers
613 Baltimore Drive, Suite 300
Wilkes-Barre, PA 18702
Voice: 570.821.1999
Cell: 570.239.2562
dsummers@borton-lawson.com



Borton
Lawson

Imagination. Delivered.

www.borton-lawson.com

613 Baltimore Drive, Suite 300
Wilkes-Barre, PA 18702-7903
borton-lawson.com

ARCHITECTURE
ENGINEERING

Borton
Lawson

